



change the Globe

A bright new era in lighting for Australia

Help customers make the change... ...to energy efficient lighting

Choosing the right globe

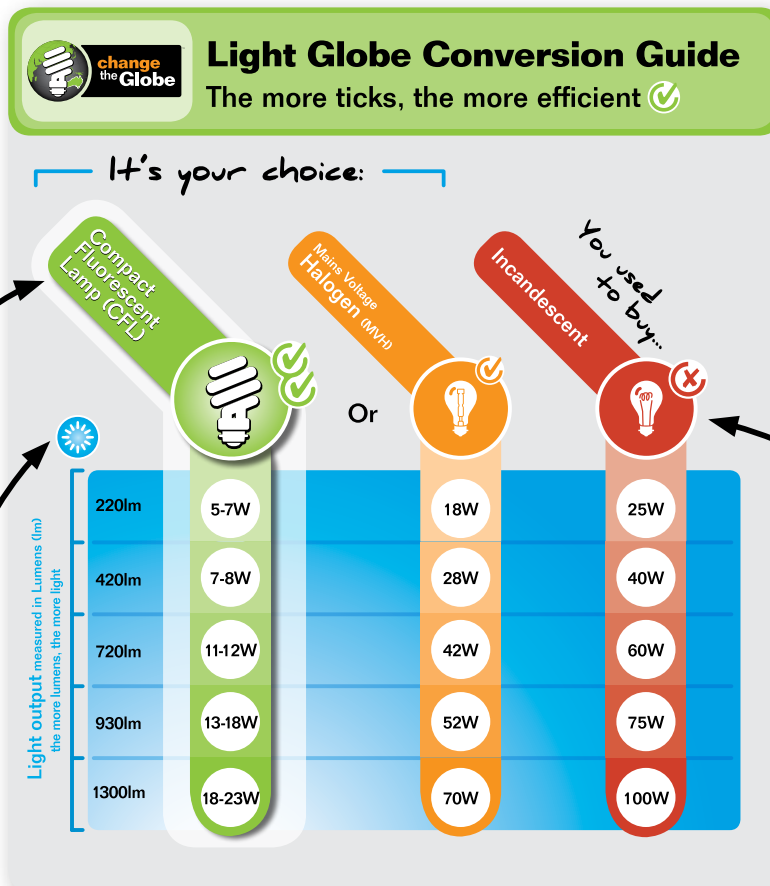
A light globe conversion guide is available in the lighting aisle to help customers choose the right CFL for their lighting needs.

Compact Fluorescent Lamps (CFLs)

Come in a range of shapes, sizes, fittings and colour temperatures to suit customer needs.

Light output (lumens)

Some brands of CFLs carry details of lumens. Lumens is a measure of light output, the more lumens, the more light.



Benefits

Lighting represents around 12% of carbon emissions from Australian homes. By choosing an energy efficient light globe, such as a CFL, customers can reduce their energy consumption to help the environment and cut their energy bills.

Inefficient incandescents

Traditional incandescent light globes are being phased out by Australian, State and Territory Governments in response to climate change.

